

# Primary closure, at home\*.

*Case photo courtesy of Dr. Michael Bell, The Ottawa Hospital, Ontario, Canada*

## **ABRA® Adhesive Skin Closure**

- > Achieves primary closure
- > Eliminates graft and donor site
- > Applies painlessly at bedside
- > Ideal for outpatient use



**ABRA® Adhesive Skin Closure**  
Because nothing beats a primary closure.

[www.justcloseit.com](http://www.justcloseit.com)

### **ABRA® systems:**

- > Abdominal Wall Closure
- > Surgical Skin Closure
- > **Adhesive Skin Closure**

**CANICA®** 1-800-705-8312  
1-613-256-0350  
[www.canica.com](http://www.canica.com)

\*Elastic Device Facilitating Delayed Primary Closure of Sternal Wound Infection. Price J, et al. Ann Thorac Surg. 2007 Mar;83:1162-5.

# ABRA<sup>®</sup> Adhesive Skin Closure

## A Dynamic Wound Closure System

### What it does:

ABRA<sup>®</sup> Adhesive Skin Closure provides non-invasive skin closure of retracted skin defects, leaving nothing behind except a sound primary repair.

### Indications:

ABRA<sup>®</sup> Adhesive Skin Closure is indicated for closure of retracted skin defects including, but not limited to, fasciotomies, compound fracture wounds, dehiscent wounds, pediatric wounds, infected wounds (when ready), pre-surgical skin expansion and for reinforcing high-tension closures.

### Why it is used:

#### Benefits:

- Achieves primary closure
- Enables primary closure after defect excisions
- Prevents dehiscence
- Eliminates need for grafts or flaps
- Improves cosmesis

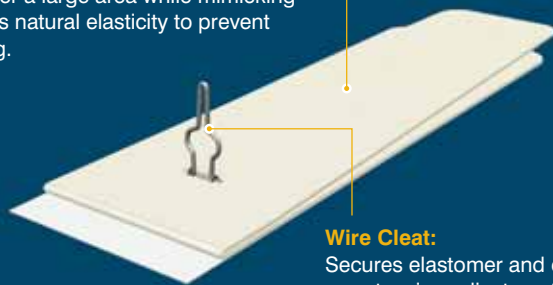
#### Features:

- Reduces LOS and OR procedures
- Topically applied at bedside
- Promotes patient mobility
- Reduces pain
- Ideal for children

### Key System Components:

#### Adhesive Anchor:

Adheres to healthy skin and distributes loads over a large area while mimicking the skin's natural elasticity to prevent blistering.



#### Wire Cleat:

Secures elastomer and enables easy tension adjustments.

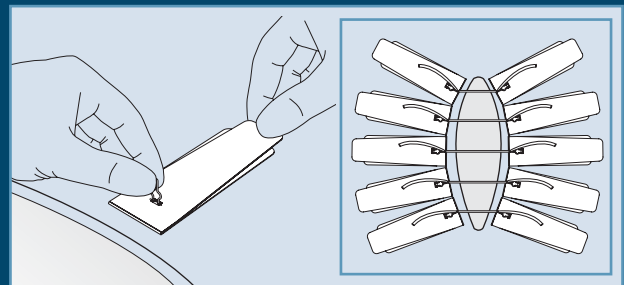


#### Silicone Elastomer:

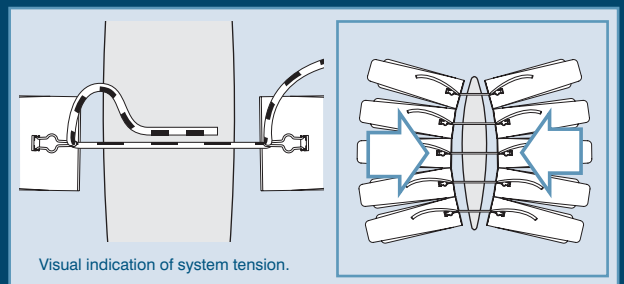
Provides the dynamic force that closes the wound. Stretches to accommodate inflammation, yet releases easily at bedside as required.

### How it works:

The ABRA<sup>®</sup> Adhesive Skin Closure system restores the primary closure option for retracted skin defects. Over time this dynamic wound closure system pulls the skin margins together under low tension, closing the wound and accelerating healing. This ABRA system eliminates the need to graft by re-approximating the skin margins, resulting in a primary closure.

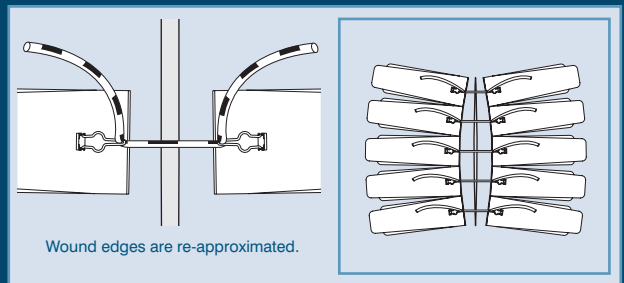


System is applied to retracted wound



Visual indication of system tension.

Tension is set and easily adjusted as wound closes



Wound edges are re-approximated.

Delayed primary closure

### Ordering Information

Description	Part Number
ABRA <sup>®</sup> Adhesive Skin Closure Set	CWK04
ABRA <sup>®</sup> Adhesive Skin Closure Set, small	CWM02

US Patent Nos. 7,361,185 & 7,429,265. Other International Patents.

# ABRA<sup>®</sup> Adhesive Skin Closure

## Because nothing beats a primary closure.

**CANICA<sup>®</sup>**  
www.canica.com

For your local distributor and product ordering information, please contact Customer Service at +1.613.256.0350, toll-free at 1.800.705.8312 (USA and Canada) or online at [www.justcloseit.com](http://www.justcloseit.com).